

SIEMENS TRAFFIC CONTROLS,

Sopers Lane,

POOLE, Dorset.

BH17 7ER.

SYSTEM/PROJECT/PRODUCT: VAX VMS UTC

OPERATOR HANDBOOK

FOR THE UTC

UPLOAD/DOWNLOAD EDITOR

This is an unpublished work the copyright in which vests in Siemens plc. All rights reserved. The information contained herein is the property of Siemens plc and is supplied without liability for errors or omissions. No part may be reproduced or used except as authorised by contract or other written permission. The copyright and the foregoing restriction on reproduction and use extend to all the media in which this information may be embodied.

ISSUE STATE

Note :- Source of documents is shown under Type as below.

1=Paper, 2=VAX, 3=Microfilm, 4=CALTEXT Disc, 5=DECmate Disc,
6=Paper Insert, 7=MAC Disc, 8=LIFESPAN, 9=SUN, 10=Other - add note.

The document comprises the following components :-

Current

<u>Pages</u>	<u>Issue</u>	<u>Type</u>	<u>Part ID</u>	<u>File ID</u>
All	28.0	10	666HU16940000	updl_hbk_V28.doc

Note: Type 10 is AMW

CONTENTS

- 1. INTRODUCTION.....1**
 - 1.1 Purpose1
 - 1.2 Scope1
 - 1.3 Related Documents1
 - 1.3.1 Reference Documents1
 - 1.4 Definitions.....1
 - 1.5 Issue State and Amendments1
- 2. GENERAL DESCRIPTION3**
 - 2.1 Overview3
 - 2.2 Uploading and Downloading Data3
 - 2.3 Data Parameters3
- 3. EDITOR SOFTWARE (CONVERT) INSTALLATION4**
 - 3.1 Computer Requirements.....4
 - 3.2 Convert Software4
 - 3.3 VBX.EXE Installation4
 - 3.4 CONVERT.EXE Installation.....5
 - 3.5 Copy CONVERT.INI File.....5
 - 3.6 Connection to UTC TMC Computer5
 - 3.7 Mapping a Network Drive.....5
 - 3.8 Associating CONVERT with UDD files.....7
 - 3.9 Creating a Desktop Shortcut for CONVERT9
- 4. EDITOR USER INTERFACE10**
 - 4.1 Loading data files.....10
 - 4.2 Main Editor Menu11
 - 4.3 Selecting Alternative Data Groups.....13
 - 4.4 Editing Data Items14
 - 4.5 Saving Edited Data Files15

1. INTRODUCTION

1.1 Purpose

This document describes the operation of the Upload / Download Editor facility for changing controller and OTU data via the Urban Traffic Control (UTC) computers.

1.2 Scope

This document is limited to describing the operation of the PC Editor part of the Upload/Download facility. Full details on Uploading and Downloading data files to/from controllers/OTUs can be found in the UTC System Operators Handbook (Reference 1.3.1(a)). The installation of the editor program (CONVERT) is also described.

1.3 Related Documents

1.3.1 Reference Documents

1.3.1(a) 666/UH/16940/000 Operator Handbook for an STC UTC System

1.3.1(b) 667/HH/20200/000 T400 Handset Handbook

1.3.1(c) 666/KE/16066/000 UTC Glossary of terms

1.4 Definitions

For all standard definitions and abbreviations used in this and related UTC documentation see reference 1.3.1(c)

UPDL - Upload / Download

Upload - Data Transmission of Controller or OTU Configuration Information from the controller or OTU to the UTC Control Centre

Download - Data Transmission of Controller or OTU Configuration Information from the UTC Control Centre to the traffic controller or OTU.

1.5 Issue State and Amendments

Issues 01.00 to 09.00 Not issued

Issue 12.00 First issue to align with V12 software

Issue 13.0 to 18.0 Not Issued

Issue 19.0 Software installation description and minor changes

Issue 20 References to STCL changed to STC

Issues 21.0 to 27.0	Not Issued
Issue 28	Updated

2. GENERAL DESCRIPTION

2.1 Overview

The Upload / Download facility enables the transfer of controller and OTU data between the street equipment and central office control computer via the TC12 data transmission system.

2.2 Uploading and Downloading Data

The commands associated with Uploading and Downloading data to T400 and ST800 Controllers and TC12 OTUs are described in the UTC System Operator Handbook. (Reference 1.3.1a) The Upload/Download Editor can only edit data files which have previously been uploaded from a controller or OTU. It is not possible to create a new data file to download to a controller OTU.

2.3 Data Parameters

Before any editing takes place, a full upload from the controller or OTU must be carried out. When this data is viewed with the Editor, it will display all the parameters which are available for editing on that particular controller or OTU.

Full details on each data parameter can be found in the T400 Handset Handbook (Reference 1.3.1b).

Some simple range checking is carried out by the Editor as the data is entered. The values entered must not exceed the maximum or minimum values included in the controller configuration. If these values are exceeded and the data file is downloaded, then the data group will be rejected due to the value which exceeds the configured limits in the controller.

3. Editor Software (Convert) Installation

3.1 Computer Requirements

The Convert software is intended to be run on a PC which is running Windows.. The descriptions which follow apply to a PC which is running Windows 95, Windows 98, Windows NT or Windows XP.

For the software to work, the PC must be connected to the UTC System by Ethernet and have TCP/IP installed. If the user is in any doubt about this, he should contact the UTC Support Desk for advice

3.2 Convert Software

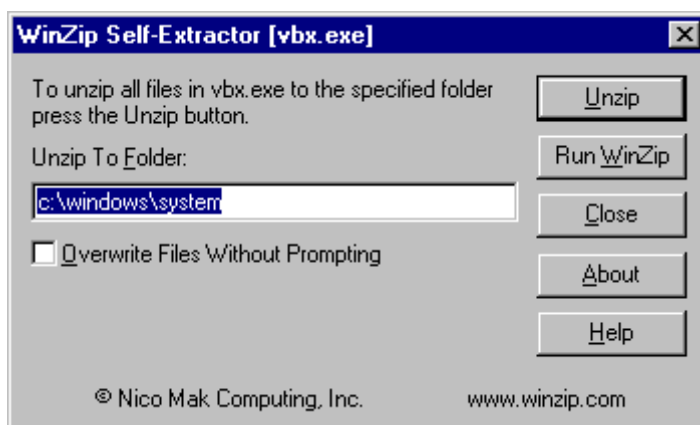
The Convert software comprises 2 files, vbx.exe and convert6.exe

The file vbx.exe contains Visual Basic run-time files which must be installed first. This only needs to be done once since any future issue of software will use the same Visual Basic run-time files.

3.3 VBX.EXE Installation

VBX.EXE is a single self-extracting ZIP file.

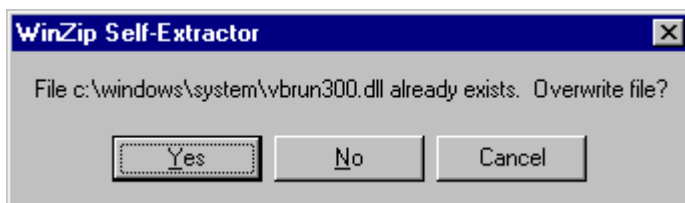
The Convert software will normally be found in the UTC Tools folder of a UTC System installation CD. After inserting the CD into the PC's CD drive the user should use Windows Explorer to navigate to the UTC Tools folder and from there select the Convert Upload Download Editor folder. Double clicking on the VBX.EXE file should start the installation process. The following window should



then appear:

Make sure 'Overwrite Files Without Prompting' is unchecked and click on the Unzip button.

If you get any messages like:



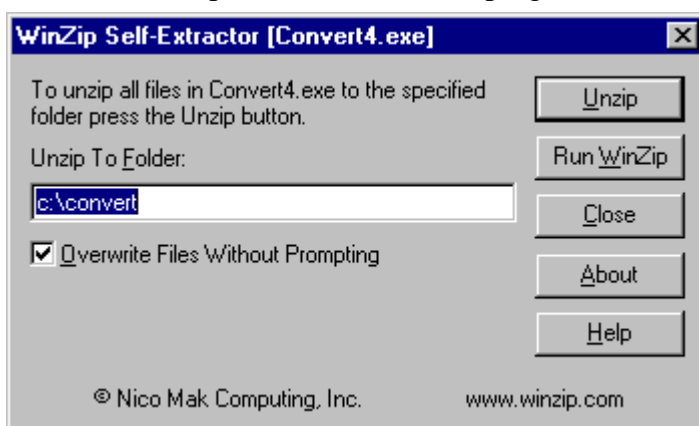
Select NO, as the versions that already exist on the PC may be ones that are more recent.

After all the files have been unzipped, click 'Close'.

3.4 CONVERT.EXE Installation

The Convert software also will normally be found in the UTC Tools folder of a UTC System installation CD. After inserting the CD into the PC's CD drive the user should use Windows Explorer to navigate to the UTC Tools folder and from there select the Convert Upload Download Editor folder. Double clicking on the CONVERT.EXE file should start the installation process. A window, similar to the one below should then appear:

Click Unzip to install the software and then Close. You may want to create a Start Menu or Desktop shortcut to the new program (C:\CONVERT\CONVERT.EXE).



3.5 Copy CONVERT.INI File

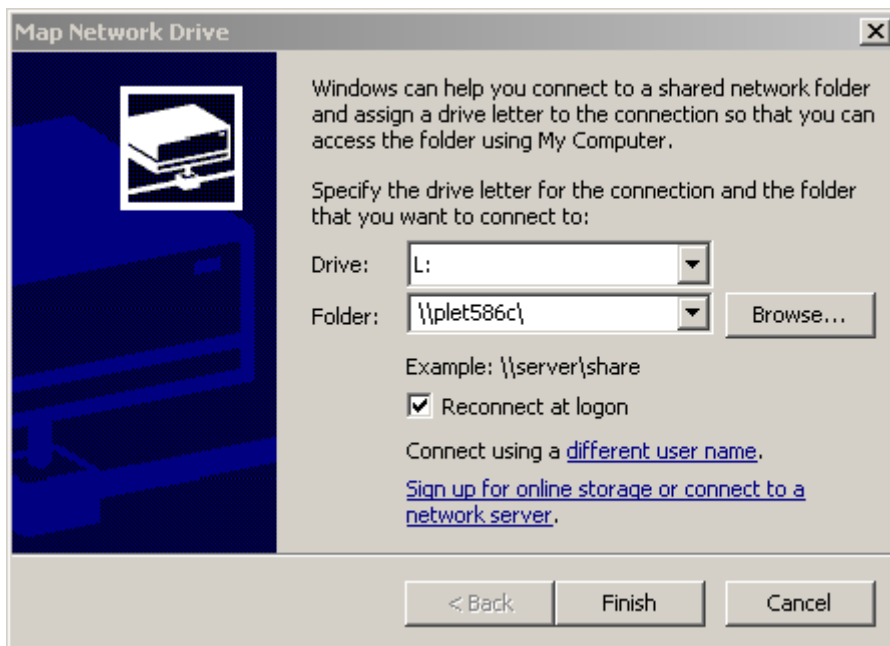
The CONVERT.INI file must be copied from the C:\CONVERT folder to the C:\WINDOWS (or C:\WINNT on NT machines) folder using Windows Explorer.

3.6 Connection to UTC TMC Computer

Having installed the software, the PC must be connected to a shared area on the UTC computer where the upload/download files reside. If the PC is used as a UTC System terminal, the settings which will enable the Convert program to connect to the UTC computer will be already established. If this is not the case, the UTC Support desk should be able to help with the setting up of a suitable configuration.

3.7 Mapping a Network Drive

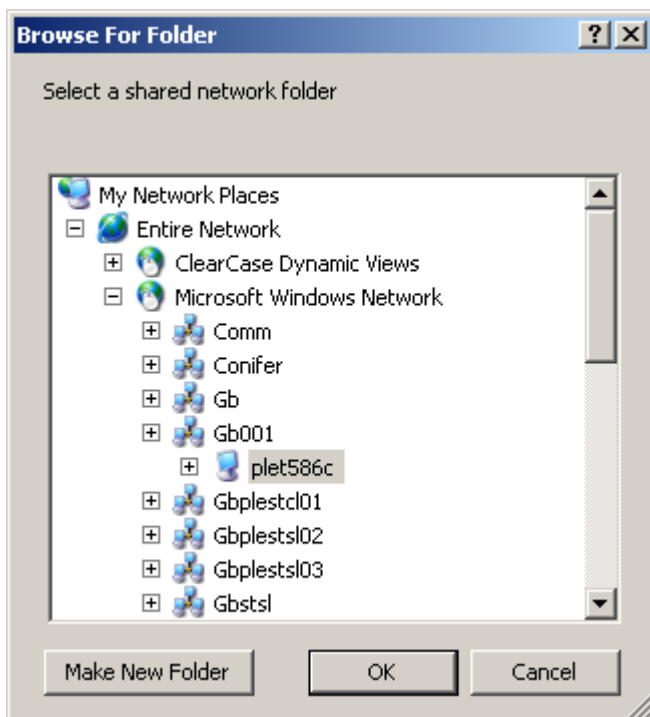
From Windows Explorer, select Tools and Map Network Drive.



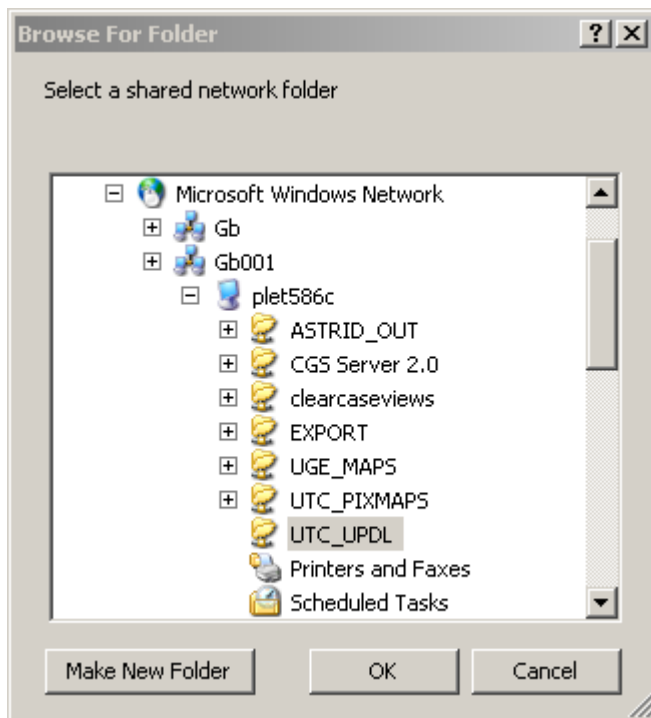
Select the drive letter you wish to use for the upload/download data directory. Ensure that the Reconnect at logon box is checked.

In the folder box type in the node name of the TMC computer. In the example screen above it is plet586c. If the TMC computer is called UTC14, \\UTC14\ should be typed in instead of [\\plet586c\](#).

The browse button should be clicked and the window, similar to that shown below, should open.



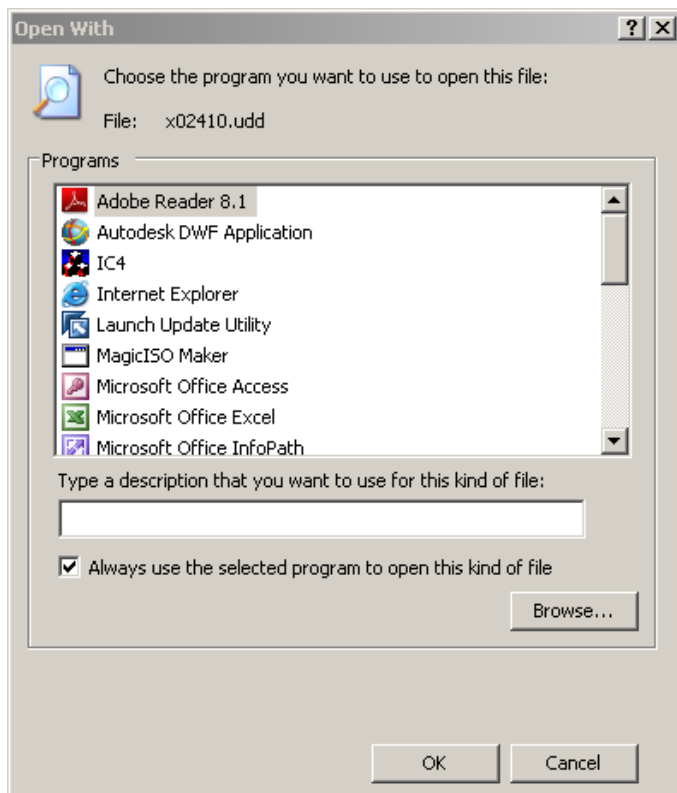
Clicking on the plus sign next to the name of the TMC will show the shared folders on the TMC.



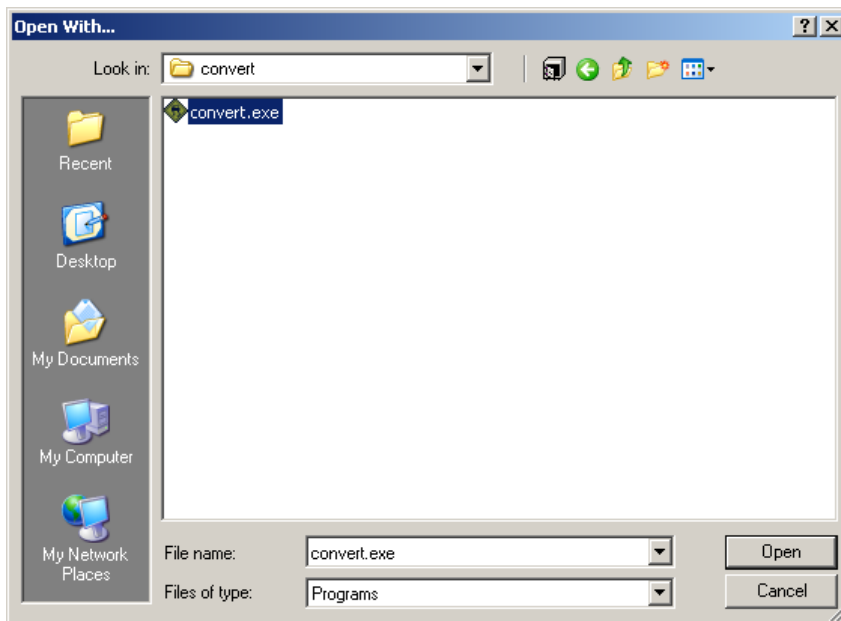
Select UTC_UPDL and click OK.

3.8 Associating CONVERT with UDD files

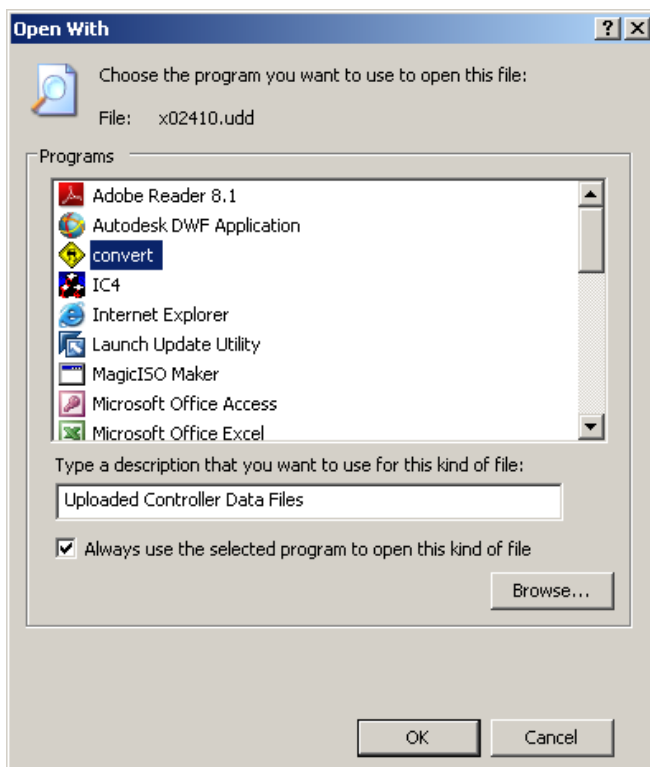
If Explorer is used to look at the upload/download drive (L: in this example) all the files with a UDD extension that have been uploaded from the controllers should be seen. For convenience, the UDD file type can be associated with the Convert editor program. From Explorer, double-click on one of these files. If the software has never been set up before then a dialog, similar to that shown below, will be seen:



An appropriate description, such as 'Uploaded Controller Data Files', should be typed into the Description box and the 'Browse...' button clicked and the browse window which then opens should be used to search for the program file C:\CONVERT\CONVERT.EXE



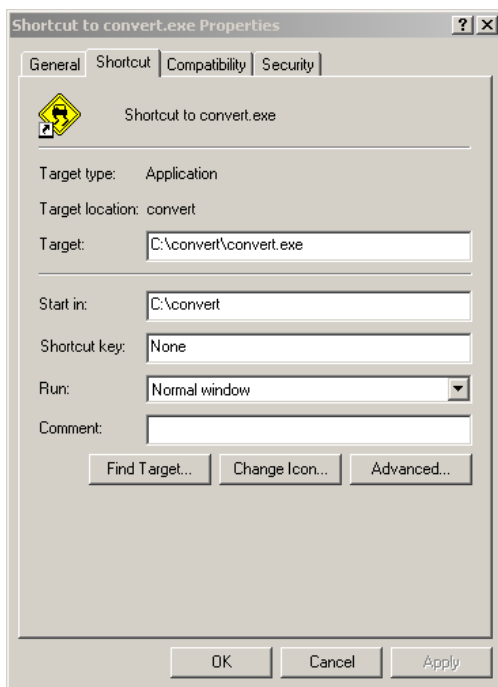
Clicking on the Open button will show the 'Open With' window with the convert program listed.



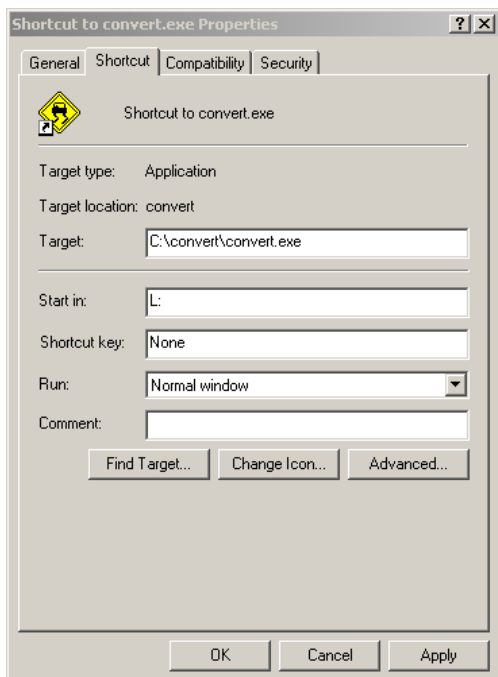
Click on OK to accept this setting.

3.9 Creating a Desktop Shortcut for CONVERT

It is recommended that you put a shortcut to Convert on the desktop. Use Windows Explorer to navigate to the C:\convert folder. Right click on the Convert.exe icon and select Create shortcut from the pop-up menu which appears. Select Shortcut to convert.exe and drag and drop it onto the desktop. Right click on the newly created desktop item and select properties. A window similar to that shown below will appear.



Delete 'C:\convert' from the 'Start in' box and replace it with the drive letter that has been assigned to the folder where the upload/download data files reside. In this example L:

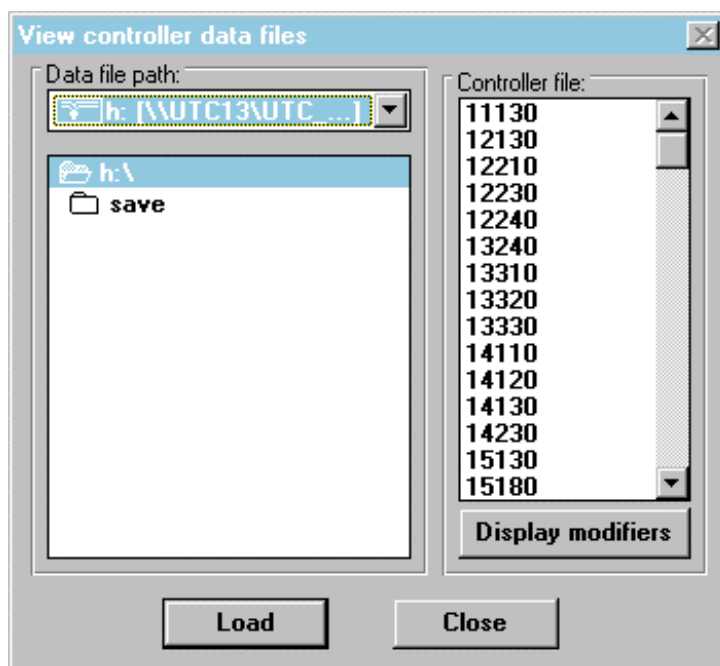


4. Editor User Interface

4.1 Loading data files

When convert is started, two windows appear, the 'View controller data files' window and the main editor window. Be patient, the 'View controller data files' may take some time to appear for it has to search, over the network, the TMC's utc_updl directory for the required files. When the 'View controller data files' window is shown, the user may select a data file to view and edit, if required.

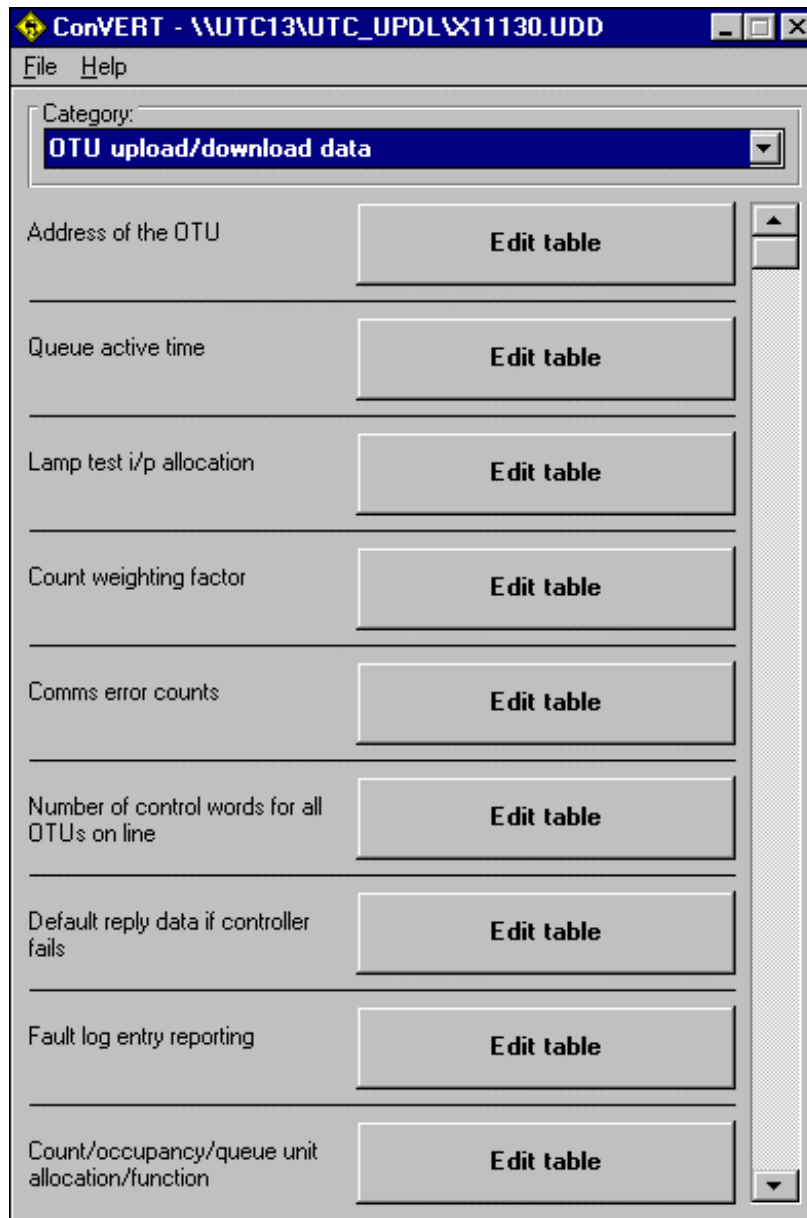
The data files uploaded from a controller will automatically be stored on the TMC and must be returned to this directory for downloading to the controller.



The data file to be edited is then selected by use of the mouse and then the "load" button clicked with the left hand mouse button.

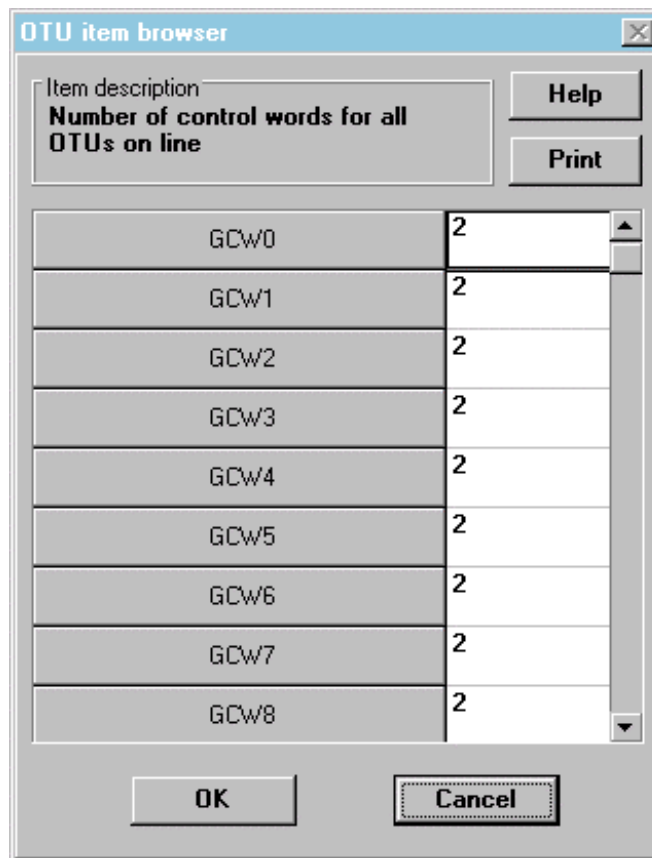
4.2 Main Editor Menu

When the data file has been completely opened by the Editor, the user is presented with a display similar to that shown below.



The default data presented for editing is the OTU Configuration data, as shown in the example above.

The full range of OTU data items can be displayed by scrolling up and down the list within the window. Each data item is then accessed by clicking on the “Edit Table” button for the chosen configuration parameter. A table is then displayed, with one or more fields containing the OTU configuration data requested as shown in the following example.



The screenshot shows a window titled "OTU item browser". At the top, there is a text field labeled "Item description" containing the text "Number of control words for all OTUs on line". To the right of this field are two buttons: "Help" and "Print". Below the text field is a table with 9 rows. Each row has a label in the first column and a numerical value in the second column. The labels are GCW0 through GCW8, and the values are all 2. At the bottom of the window are two buttons: "OK" and "Cancel".

Item description	Value
GCW0	2
GCW1	2
GCW2	2
GCW3	2
GCW4	2
GCW5	2
GCW6	2
GCW7	2
GCW8	2

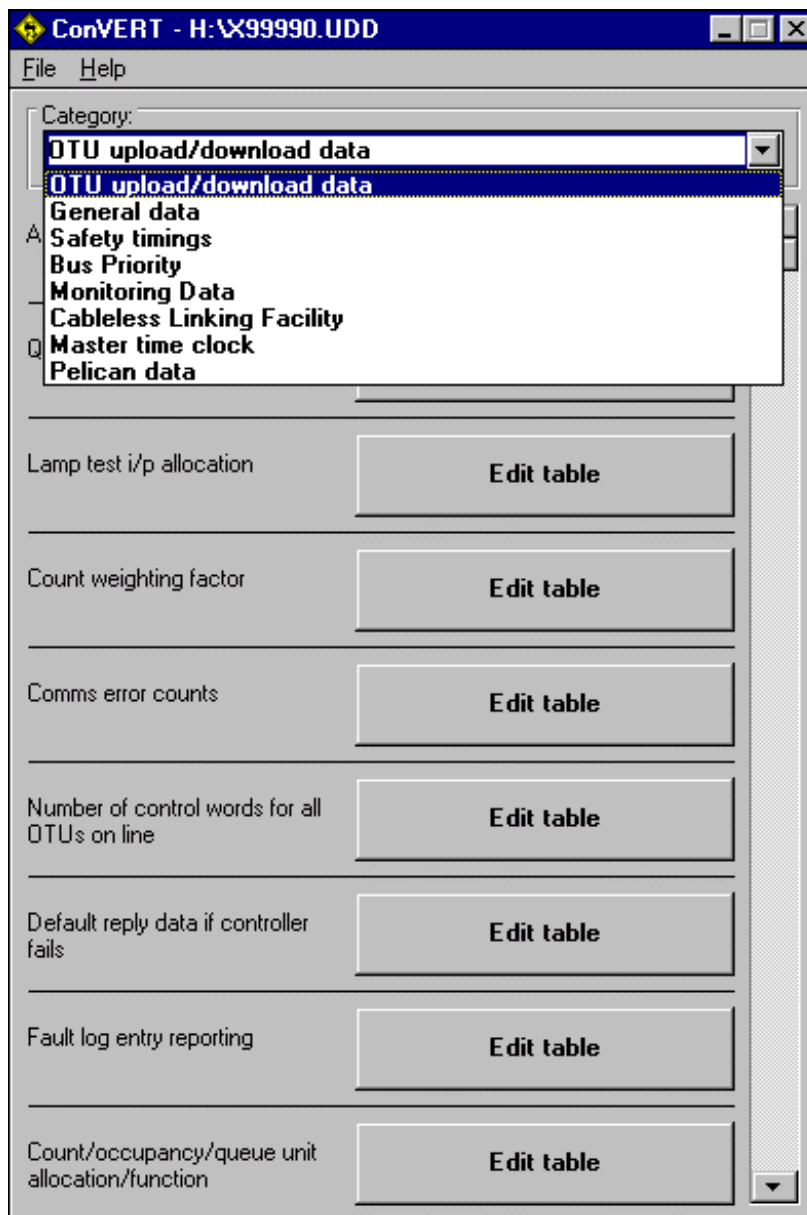
This example shows the number of control bytes allocated to each OTU on the telephone line. In order to change the data displayed in any of the tables, the old value must be deleted and a new value entered by using the mouse to select the field and the keyboard to enter the new value.

When the new or corrected value has been input, the data is stored by clicking on the “OK” button. If any help text is required, this is available by clicking on the “Help” button on the top right of the window.

To cancel the changing of the data item without saving any changes, simply select the “Cancel” button, which will return the user to the previous selection list.

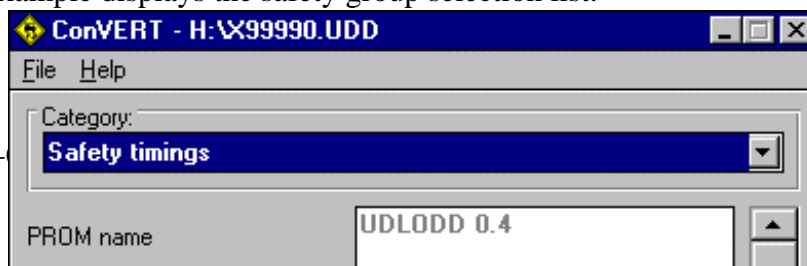
4.3 Selecting Alternative Data Groups

To select alternative data groups for editing, a pull down menu is available at the top of the main editor menu display. This is activated by clicking on the arrow to the right of the data group and this displays the complete list of data groups available, as shown in the example below.



The data group required for editing can be selected by moving the mouse pointer down the list while holding the left hand mouse button down. Once the required item is reached in the list the left hand mouse button can be released and the editor will display the selection list for the required data group.

The display of each of the data groups follows a standard format and the following example displays the safety group selection list.



4.4 Editing Data Items

Where the data items are shown individually, they are edited directly, using the mouse to select the appropriate item and the keyboard to edit the value.

If the data is presented in a tabular form, then clicking on the “Edit Table” button for the data item will bring up the table containing the values to be edited.

Data can only be edited if it has previously been uploaded from the controller. If no data has been uploaded, then the text “No Data Present” is displayed in the field.

Data items which are classified as “Read Only” are displayed to the operator in grey and cannot be edited.

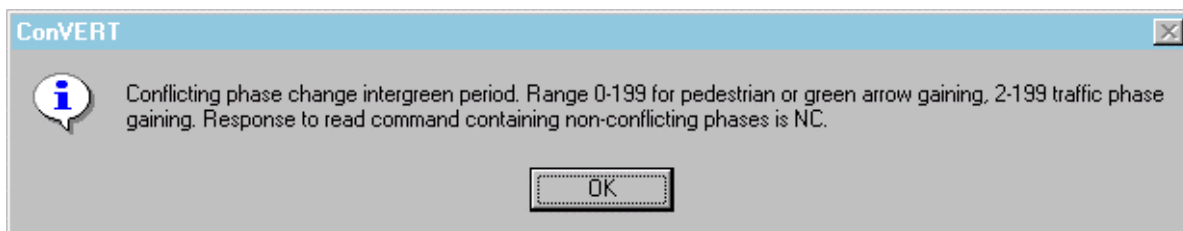
The example below shows a table of data to be edited.

The screenshot shows a window titled "Edit table data" with a table description "Intergreen timers" and a "Help" button. The table has columns labeled "From A" through "From H" and rows labeled "To A" through "To D". The values in the table are as follows:

	From A	From B	From C	From D	From E	From F	From G	From H
To A	-----	5	5	5	NC	NC	NC	NC
To B	5	-----	5	5	NC	NC	NC	NC
To C	5	5	-----	5	NC	NC	NC	NC
To D	5	5	5	-----	NC	NC	NC	NC

Each value contained in the table is edited in the same manner as any other single data item. To view the values on the right hand side of the table, the scroll bar across the bottom of the display is used.

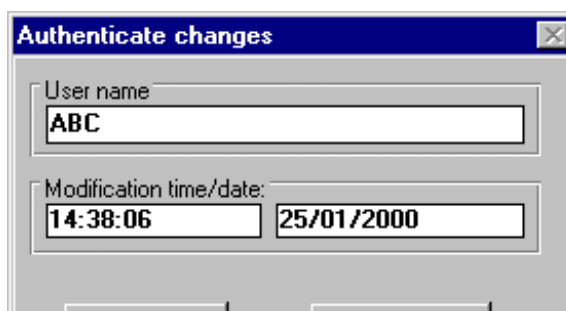
If any help is required, the “Help” button at the top right of the table can be used to display a brief description of the data item and any upper and lower range limits. An example of this is shown below.



The help text is cleared by selecting the “OK” button and the display returns to the field currently being edited.

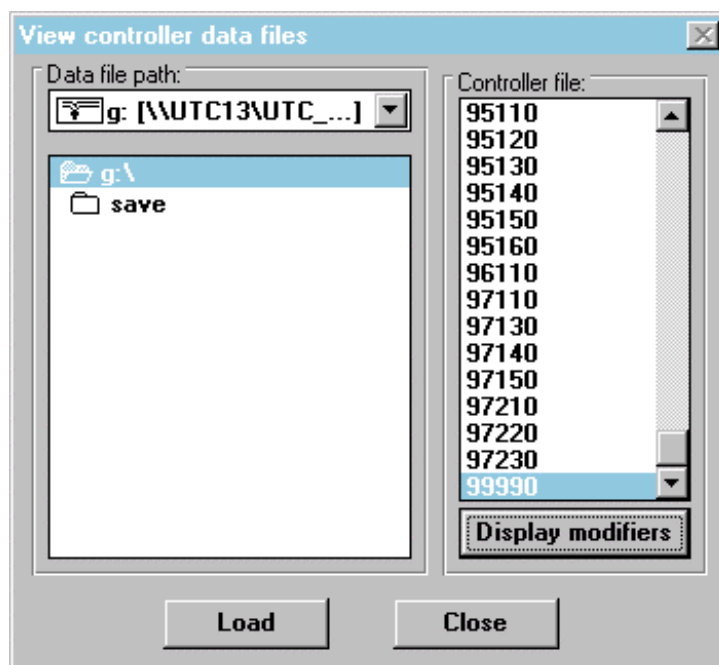
4.5 Saving Edited Data Files

When all the changes required are complete, the new data file must be saved prior to downloading to the controller by the VAX Operator commands. This is done by selecting the save option from the Editor “File” menu. Before the file can be saved, the user must authentic the changes, normally in the form of the initials of the user, as shown below.

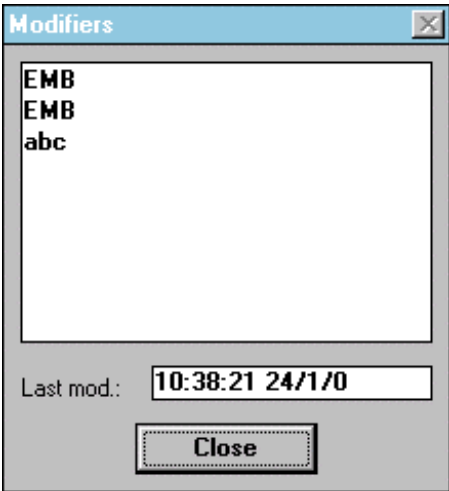


The time and date of the modification are automatically included from the time and date stored on the PC. When the “OK” button is selected, the edited data file is saved to its original location on the TMC, overwriting the old version of the file.

It is possible to view the last ten authentication's, along with the date and time of the most recent change to the data file. To do this, the first stage is to select the “Open” option from the “File” menu, which displays the following window.



When this window is displayed, the chosen controller file should be highlighted using the mouse and the “Display Modifiers” button clicked. This will display the last ten users who modified the file, along with the date and time of the most recent modification to the file, as shown below.



This display is cancelled by clicking on the “Close” button.

INDEX

Data Parameters	3	Saving Edited Data Files.....	15
Editing Data Items	14	Selecting Alternative Data Groups	13
Loading data files.....	10	Uploading and Downloading Data.....	3
Main Editor Menu.....	11		