

Pole and wall mounted

AC Single Outlet Chargers

The Siemens Single Outlet AC public charger can be pole or wall mounted and has been designed and developed for deployment at workplaces and public charging locations such as car parks and supermarkets.



Our units are designed to reflect the core product values of simplicity, durability and safety. Simple lines and compact form help the charger blend-in with the environment and landscape, with the design intended to provide users with the assurance and confidence that vehicle charging is both simple and safe.

Available in a range of colours, this versatile AC Single Outlet charger is easy to install and operate and can be integrated into an existing charging infrastructure network. Units have power output ranges from 3.7kVA to 22 kVA and are tested and accredited with all compatible electric vehicles.

All Siemens chargers can be connected to the Siemens remote technical portal allowing Siemens to actively monitor, configure, update and control chargers and provide customers and end users with an effective, resilient and highly available EV charging network.

From multi-standard rapid charging to single outlet AC charging, Siemens provides an extensive portfolio of electric vehicle charging solutions. Our EV charging solutions are based on proven technology and are designed, manufactured and installed for long-term deployment and high levels of usage.

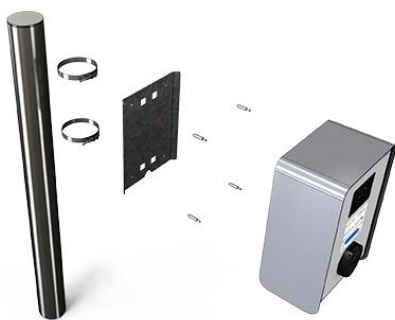


Siemens AC Single Outlet Charger highlights include:

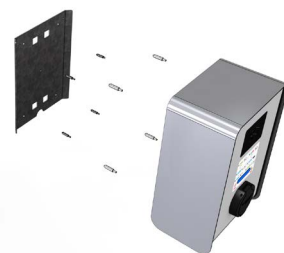
- Full choice of charging outputs from 3.7 kVA to 22 kVA
- Compact design with pole and wall mount options
- RFID user authentication
- Fully compatible with OCPP back-offices
- In-built communications (3G; LAN; Wi-Fi)
- Low-cost installation
- Available in 8 colours, with custom branding options

Technical Information

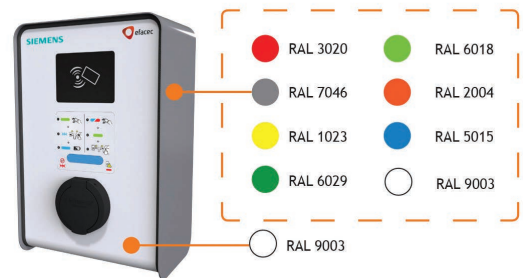
Nominal Input				
Phases / lines	1 phase + neutral + PE		3 phases + neutral + PE	
Voltage	230 Vac ± 10%		400 Vac ± 10%	
Frequency	50 or 60 Hz		50 or 60 Hz	
Input current	16 A	32 A	16 A	32 A
Input power	3,7 kVA	7,4 kVA	11 kVA	22 kVA
Nominal Output				
Voltage	230 Vac ± 10%		400 Vac ± 10%	
Current	16 A	32 A	16 A	32 A
Nominal power	3,7 kVA	7,4 kVA	11 kVA	22 kVA
Over current	20 A	40 A	20 A	40 A
RCD	30mA (Type A)		30 mA (Type A)	
General Specifications				
Equipment	Single AC output equipment			
Mounting	Pole or Wall Mount			
Communication with EV	Pilot Signal according to IEC61851			
Plug (or socket)	IEC62196 Type-2 (others under request)			
AC Human machine interface				
Display	Simple LED indications			
RFID system	Mifare (Classic, DesFire EV1)			
Communication	3G (GSM) LAN Wi-Fi			
Communication protocols	OCPP (1.2; 1.5) upgradable to future OCPP standards			
Place of installation	Indoor/Outdoor			
Altitude	Up to 1000m			
Protection degree	IP54 IK10			
Operating Temperature	-25 to +50 °C			
Optional Cold Option	-35 to +50 °C			
Storage temperature	-40 to +60 °C			
Humidity	5% to 95%			
Dimensions (W x D x H)	284 x 432 x 215mm			
Weight	9 Kg			



Pole mount



Wall mount



Choose your colour

Siemens Mobility

Traffic Solutions

Sopers Lane, Poole, Dorset, BH17 7ER

Tel: +44 (0) 1202 782000 Email: sales.stc@siemens.com

siemens.co.uk/traffic

© Siemens 2015. All rights reserved.

