

The IC4 configurator is an easy to use tool for generating configuration data sets for the whole range of Siemens' high performance traffic and pedestrian controllers. Coupled with the optional emulator facility, it provides an effective solution to the configuration needs of both experienced and novice traffic engineers.

#### IC4 configurator

IC4 is a Windows-based system providing advanced features for the entry and validation of data required to configure the ST700, ST750, ST750 ELV, ST800, ST900 and ST900 ELV controllers.

Data is entered via a series of forms and is validated for correctness as part of a sophisticated error-checking process. Enhanced navigation aids and selectable levels of configuration complexity insulate the user from controller facilities that are not being used, simplifying the configuration process.

User-generated templates may be set up with user-specific data, e.g. particular handset range limits or special conditioning features. A new configuration may be based on these templates and any number of templates may be created.

The data generated by the system is stored in the controller, along with the IC4 source data, ensuring it can never be lost. The data can be retrieved via the handset port in typically less than one minute and subsequently edited to create a new configuration.

Often, the management of configuration changes made on-street poses major problems for many users. The IC4 system has a 'view differences' option, which enables these changes to be automatically incorporated within the controller configuration file. They can then either be saved for future reference or re-downloaded to the controller as a new configuration.



#### IC4 configurator

- Simple to install and easy to use
- Context-sensitive online help
- Selectable levels of complexity to aid less frequent users
- IC4 data file held within Configuration PROM for maximum data security
- Automated management of handset changes made on-street

#### IC4 emulator

- Links seamlessly with IC4 configuration data
- Advanced emulation of up to eight linked controllers, on a single PC
- Easy to understand representation of on-street equipment
- Operation runs in real time and up to 60 x real time
- Controller 'single step' option
- Full handset and manual panel functionality

## IC4 configurator and emulator

Traffic Solutions

**SIEMENS**

## IC4 emulator

The optional emulator is a feature-rich tool, which links seamlessly with IC4 to provide an advanced environment for debugging and proving of Siemens controller configurations. Using the same software source files as the controller firmware, it ensures a highly accurate representation of the controller operation on a PC.

Up to eight linked controllers may be emulated concurrently on a single PC, and any physical or time-based linking between them may be set up and fully exercised within the emulator.

Extensive automated input simulation is available, allowing patterns of loop and pushbutton activations to be pre-programmed and executed with ease, under the control of a new 'Simulation Manager' tool.

The traffic engineer is able to program the status display to show multiple controllers if required, with a sophisticated time line that enables easy understanding of how a particular configuration will operate on-street.

Controller emulation may be run in real time or up to 60 times faster than real time, so that extensive testing over long periods may be undertaken quickly. Controller data may be logged and subsequently reviewed to assist configuration validation. The user is also able to 'single step' the controller through each of its processing cycles, so that the performance of special conditioning and response to inputs, etc, can be readily observed and corrected if necessary.

Full handset and manual panel functionality are provided and these, coupled with the extensive configuration debugging aids and a user-programmable controller status display, provide the most efficient environment available for the proving of Siemens' controller configurations.

## Technical specification

### PC specification (minimum)

- Any PC with processor, memory and hard disk specifications appropriate to the operating system being used
- Serial port required for controller connection
- Serial or USB port required for PROM programmer connection
- 15" monitor at 1024 x 768 pixel resolution, 256 colour

### Operating system

- Windows™ 2000, XP and VISTA

### Controllers configured

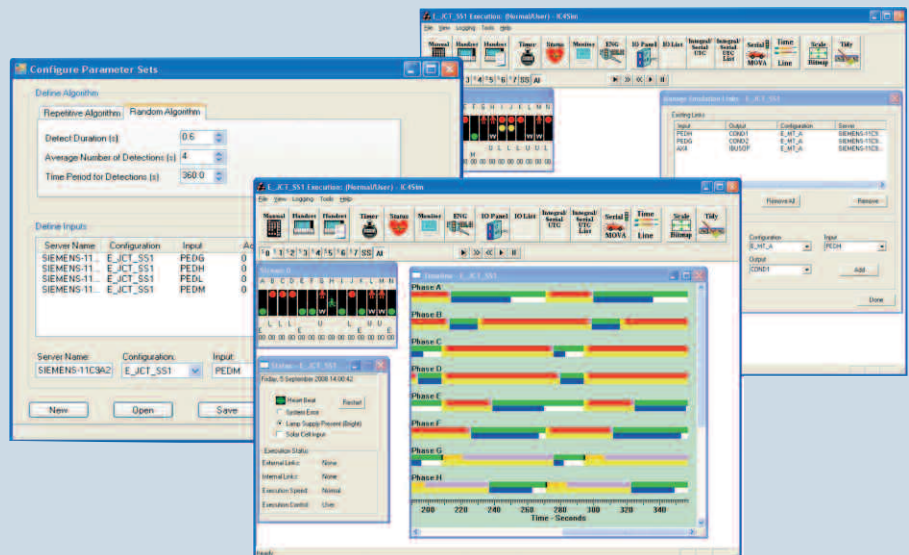
- Siemens ST700, ST750, ST750 ELV, ST800, ST900 and ST900 ELV

### Import capabilities

- IC3 Type 200 configurations (All firmware issues)
- IC3 Type 400 configurations (All firmware issues) (For both T200 and T400 configuration certain facilities, e.g. CLF and lamp monitoring, require reconfiguration due to improved functionality provided by the later controllers)
- Data import directly from Linsig™ generated data files

### Direct controller access

- Configuration data retrieved/sent directly from/to ST700/ ST750/ ST750 ELV/ ST800/ST900/ST900 ELV controllers via the handset port



**For further information, please contact:**  
Siemens Mobility, Traffic Solutions, Sopers Lane,  
Poole, Dorset BH17 7ER UK

Telephone: +44 (0) 1202 782000  
E-mail: sales.stc@siemens.com

[www.siemens.co.uk/traffic](http://www.siemens.co.uk/traffic)

© Siemens plc 2009. All rights reserved.

This publication is issued to provide outline information only, which (unless agreed by the Company in writing) may not be used, applied or reproduced for any purpose or form part of any order or contract or be regarded as a representation relating to the products or service concerned. The Company reserves the right to alter without notice this specification, design, price or conditions of supply of any product or service.