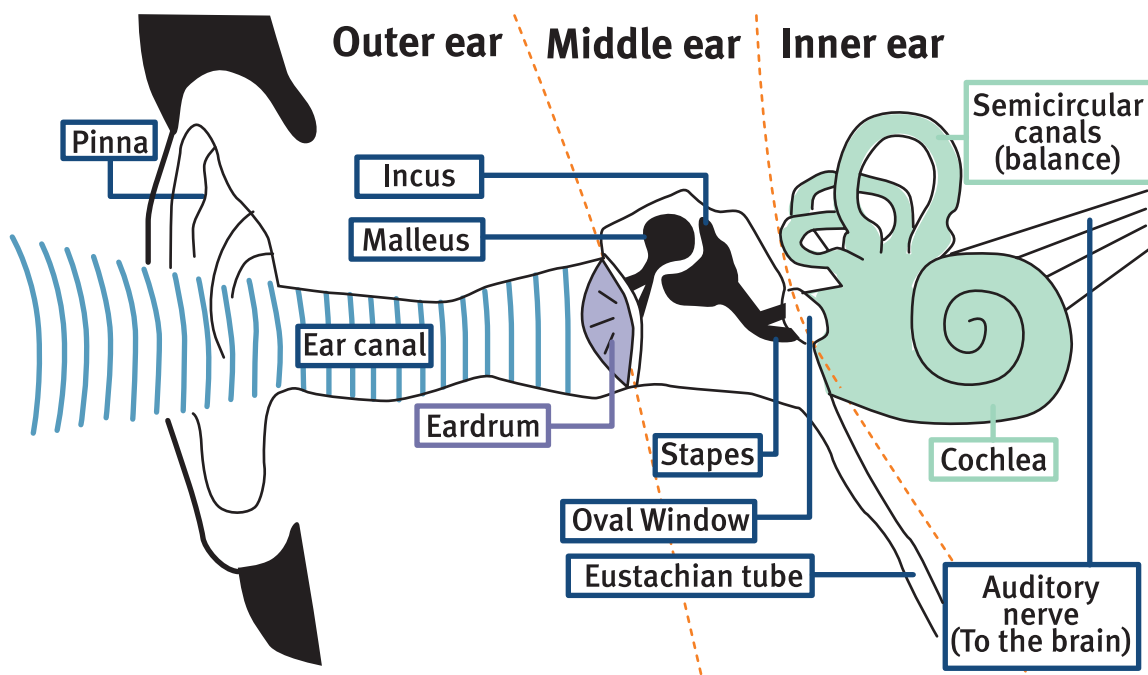
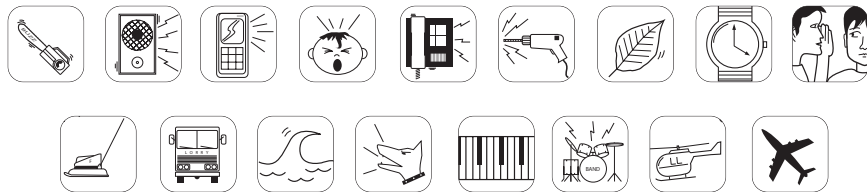
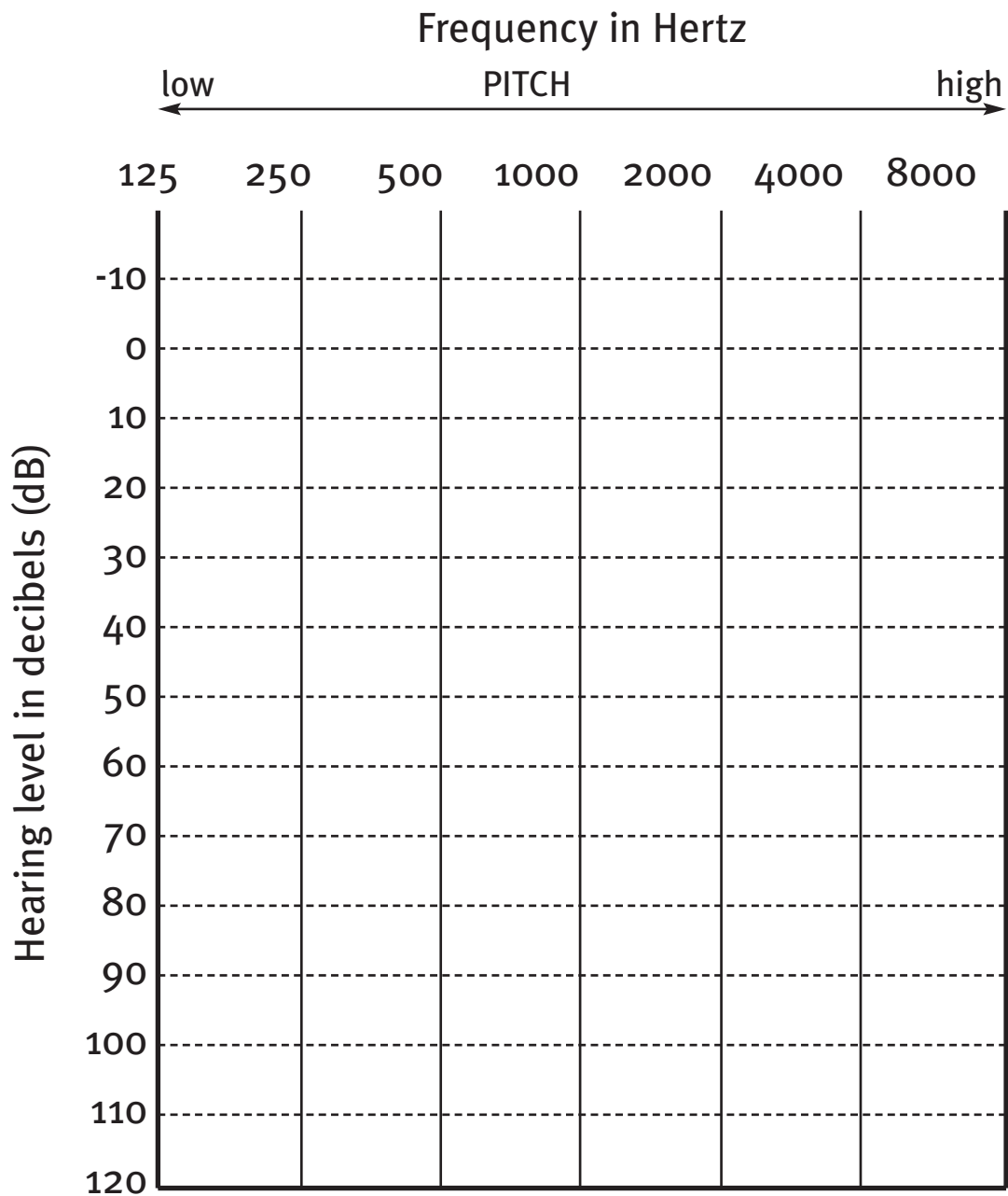


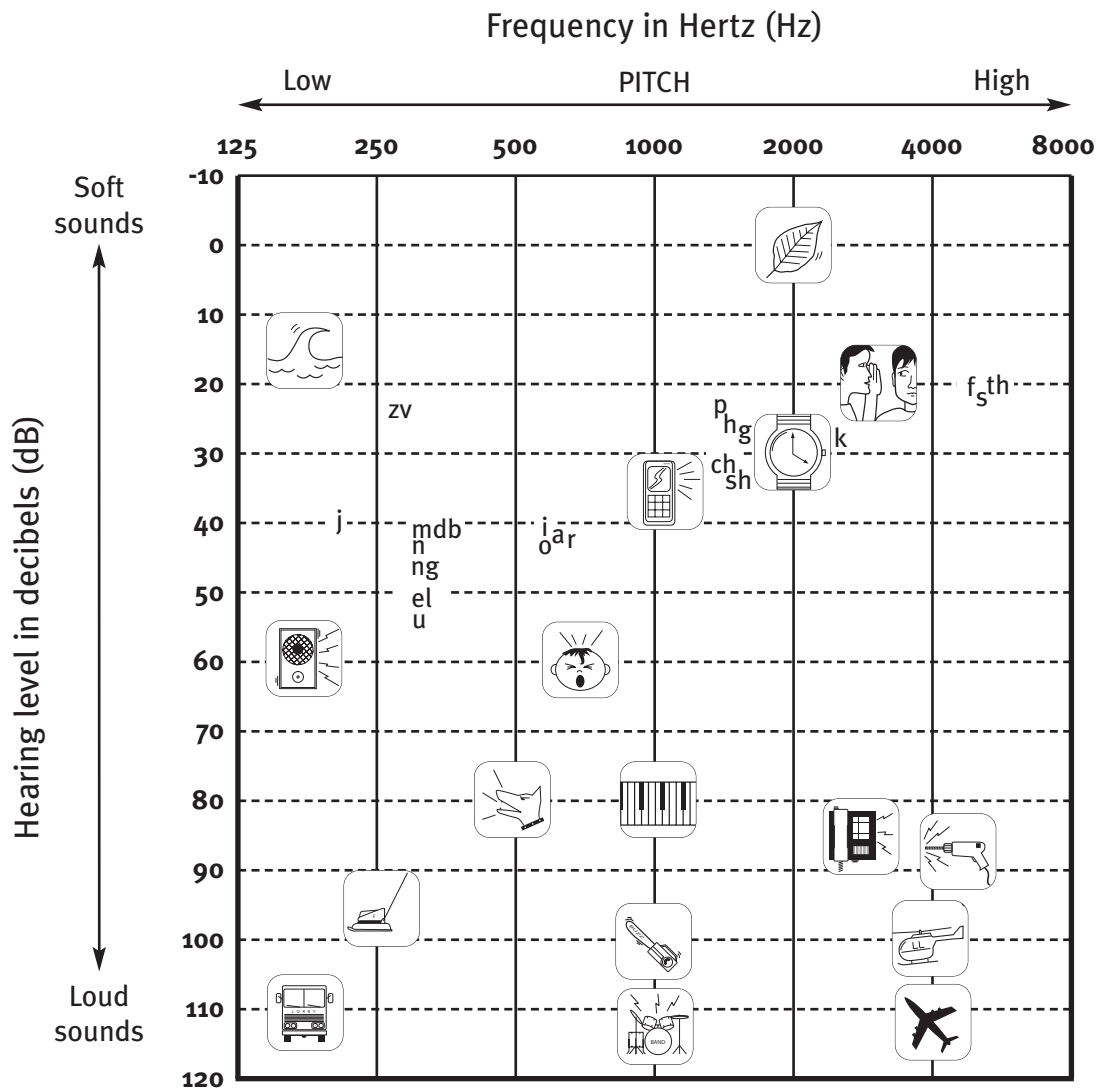
The ear



Blank audiogram



Audiogram with sound pictures



Levels of deafness:

Mild deafness	24 - 40 dB
Moderate deafness	41 - 70 dB
Severe deafness	71 - 95 dB
Profound deafness	95+ dB

Quiz – True or False

Names

Date

With your partner read the following quiz questions and tick true or false for each question. **Read each question carefully.**

- 1) Deaf people cannot talk true false
- 2) Deaf people can read Braille true false
- 3) Deaf people can read and write true false
- 4) Deaf people are different true false
- 5) Some deaf people use sign language true false
- 6) Deaf people cannot enjoy music true false
- 7) Deaf people can hear everything with their hearing aids on true false
- 8) Deaf people can get jobs true false
- 9) Deaf people can go to university true false
- 10) Deaf people cannot drive cars true false
- 11) All deaf people can lipread true false
- 12) Deaf people are not smart true false
- 13) Deaf people do not watch TV because they can't hear it true false
- 14) Deaf people cannot go on an aeroplane true false

Hearing aids



Direct audio input lead to connect to radio aid

Audio shoe

Microphone

Elbow or tone hook

Tube



Volume control

Programming socket

Function/mode switch

Audio input contacts

Earmould

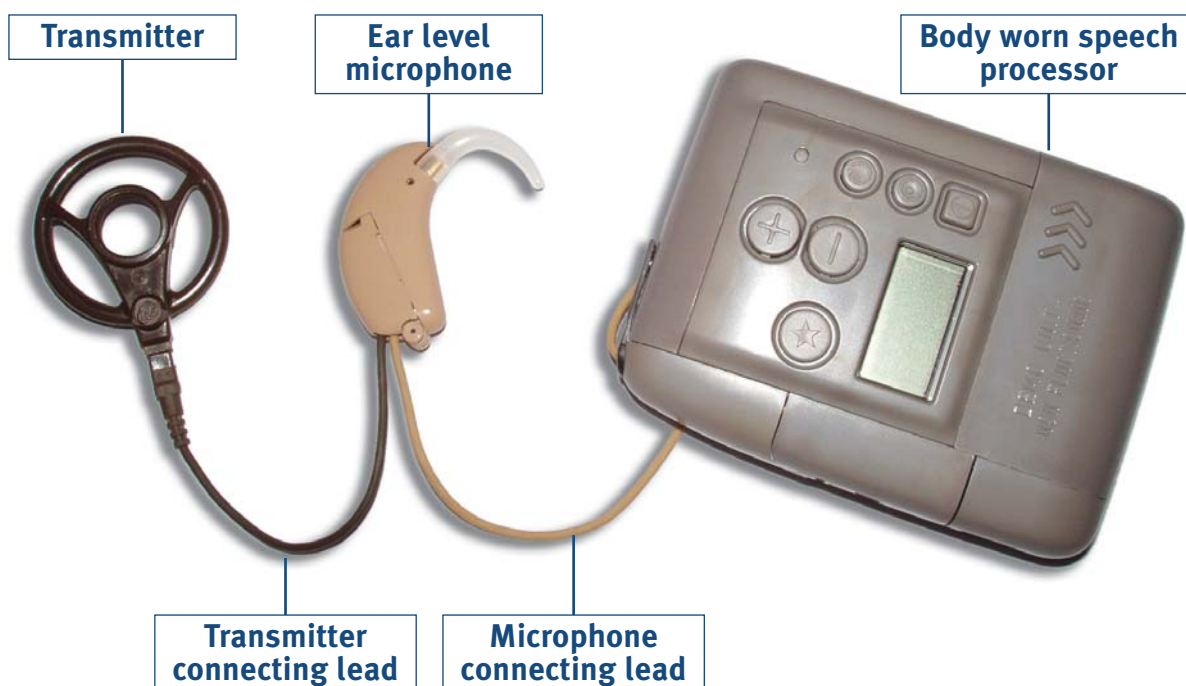
Battery compartment

Cochlear implants

A typical ear level cochlear implant



A typical body worn cochlear implant



Radio aids

A radio aid consists of a transmitter, worn by a teacher and a receiver worn by your child.



Neckloop



Behind the ear receiver

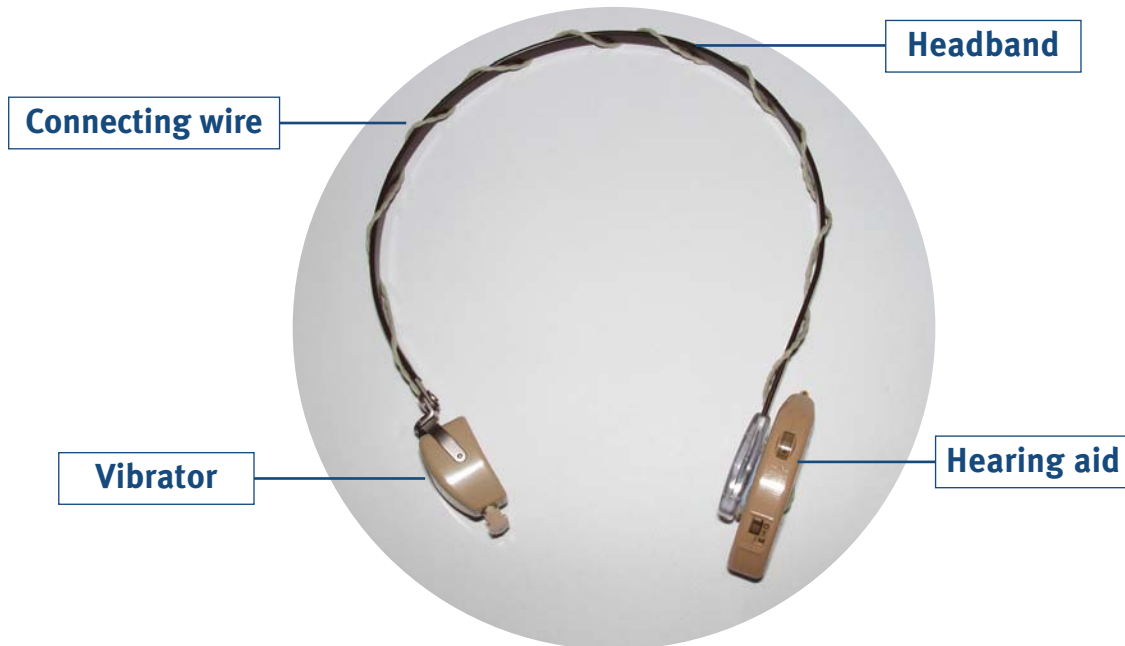


Body worn receiver

Mircophone and transmitter

Other hearing aids

Bone conduction hearing aid



Bone anchored hearing aid



In the ear hearing aid



Hearing aids checklist

Hearing aid

Casing, elbow	check they are not cracked, split or loose
Earmoulds	check they are not split or damaged, check for wax, if it is blocked use a pin to unblock it, if there is a more severe blockage you may need to gently wash the earmould in warm soapy water
Tubing	check it is not squashed, hardened, discoloured or split, if it is it needs to be replaced. If there are droplets of condensation in the tubing gently pull it off the elbow and use a puffer to clear it
Batteries	check the battery is in the right way round and the hearing aid is switched on.
Volume and settings	if there are any visible controls check they are on the correct settings for the child
Programmes	check it is on the correct programme, for example there may be a different programme for use with a radio aid
Listening check	use an attenuated stetoclip to listen to the aid to check it is working and does not sound unusual or distorted

Cochlear Implant

Casing	check it is not split, cracked or loose
Programme/settings	check it is on the correct programme and setting for the child
Lead	check it is not split or worn and that the connections are not loose
Display	check the processor display for any fault warning lights or indicators
Coil	check it is not loose, ask the child to put on their processor and if appropriate use a wand to check it is working, for example the light comes on
Batteries	check they are in correctly, fully charged and the processor is switched on
Listening check	if listening earphones have been provided use them to check that the microphone is working and the sound does not sound unusual or distorted

Radio Aids – transmitter and receiver

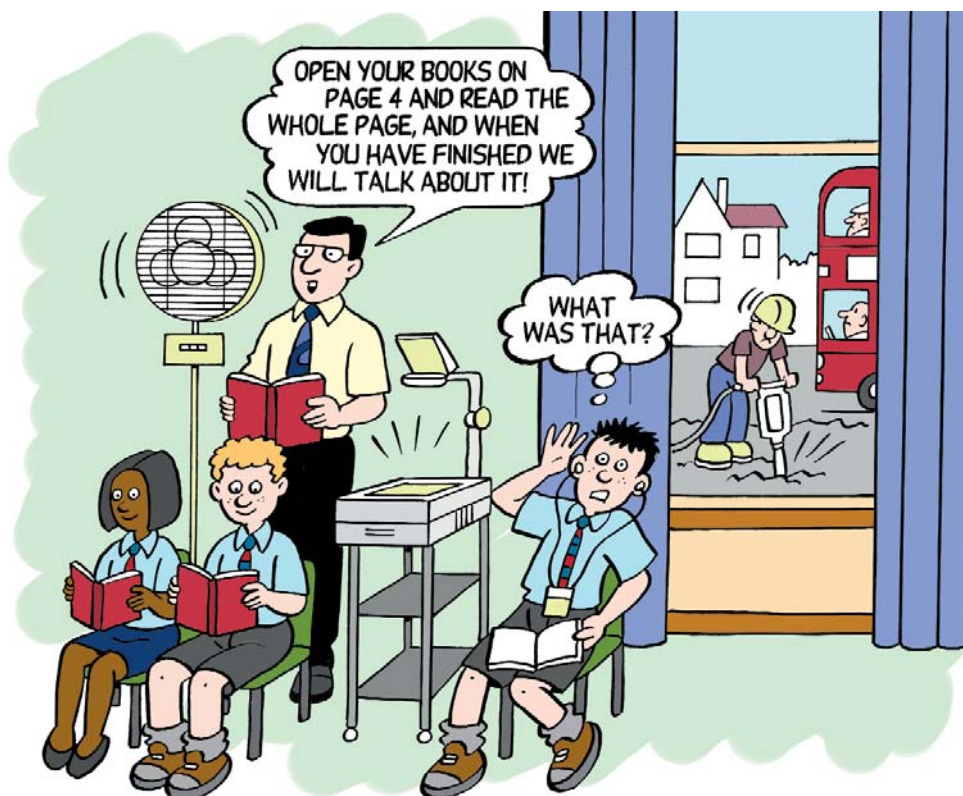
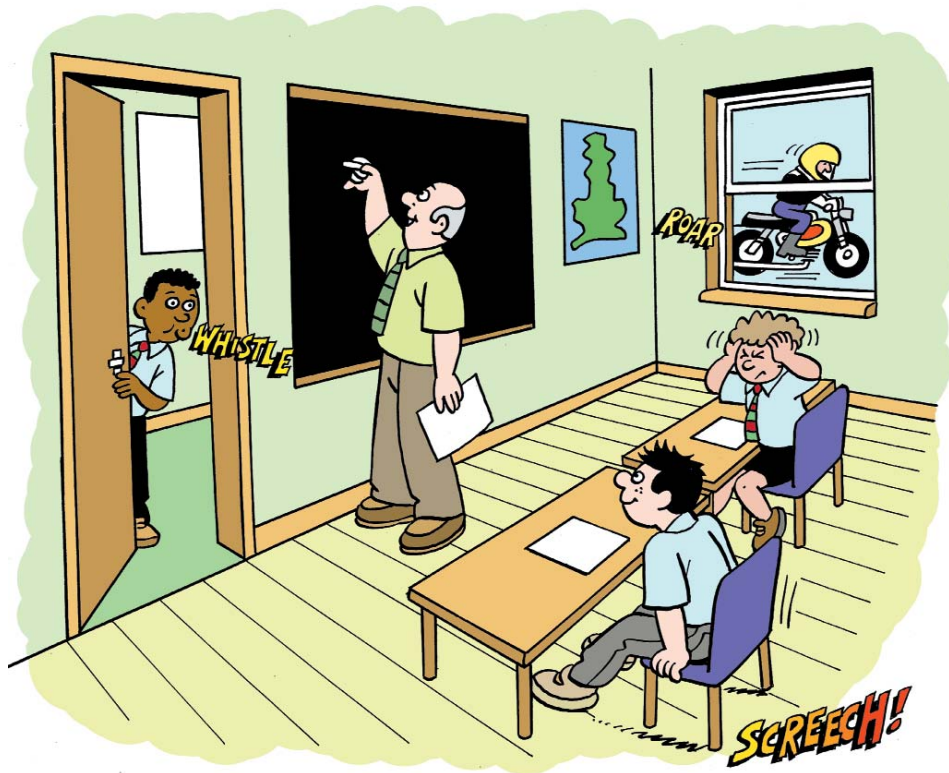
Casing	check it is not cracked, split or damaged
Microphone	check it is not damaged and the cover fits, if necessary replace
Leads	check they are not worn or damaged , if necessary replace
Batteries	check batteries are fully charged and fitted correctly, check cover and contacts, if necessary replace
Channels	check both transmitter and receiver are on the same channel number, letter or colour
Audio shoes	check they are not cracked, split or loose, if so replace
Aerial	check there is no aerial missing or damaged
Display	check displays for any fault warning lights or indicators
Controls	check volume and other controls are set correctly for the child
Listening check	for children with hearing aids, listen to receiver through their aids using an attenuated stetoclip, ask someone to speak into the transmitter at a distance, connect hearing aids to receiver and listen to each aid in turn. For children with a cochlear implant, listen by connecting headphones provided by the manufacturer to the processor if available.

The British fingerspelling alphabet



© DEAFSIGN sign graphics cath@deafsign.com

How would you make these classrooms more listener friendly?



How would you make these classrooms more listener friendly?

