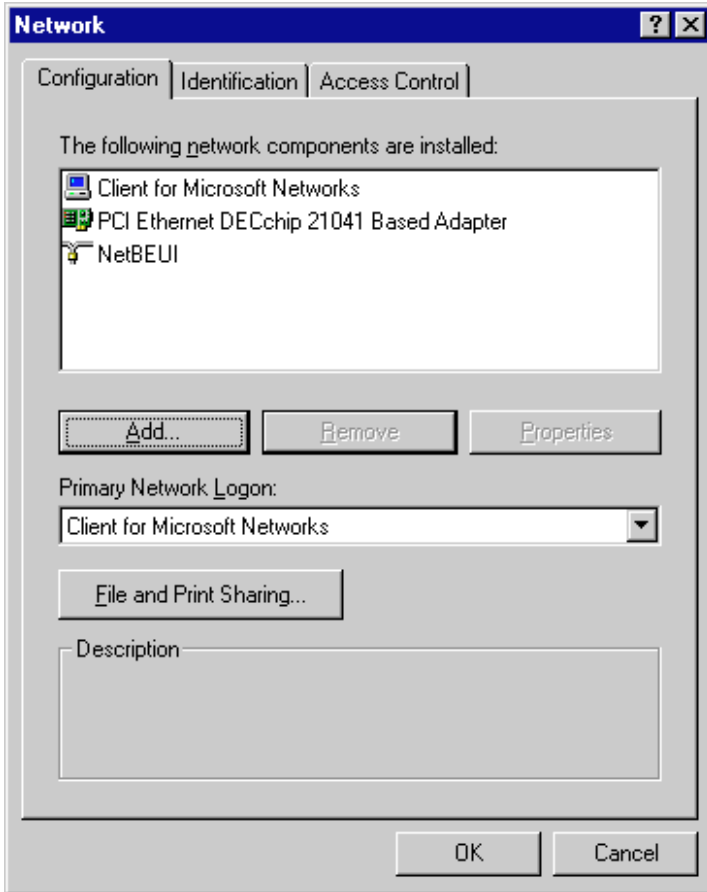
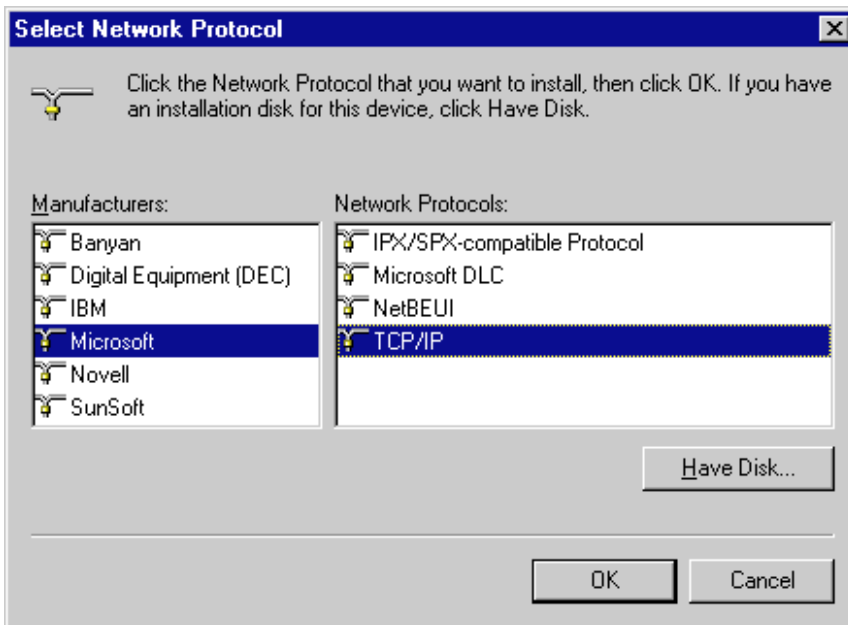


Select control panel/network



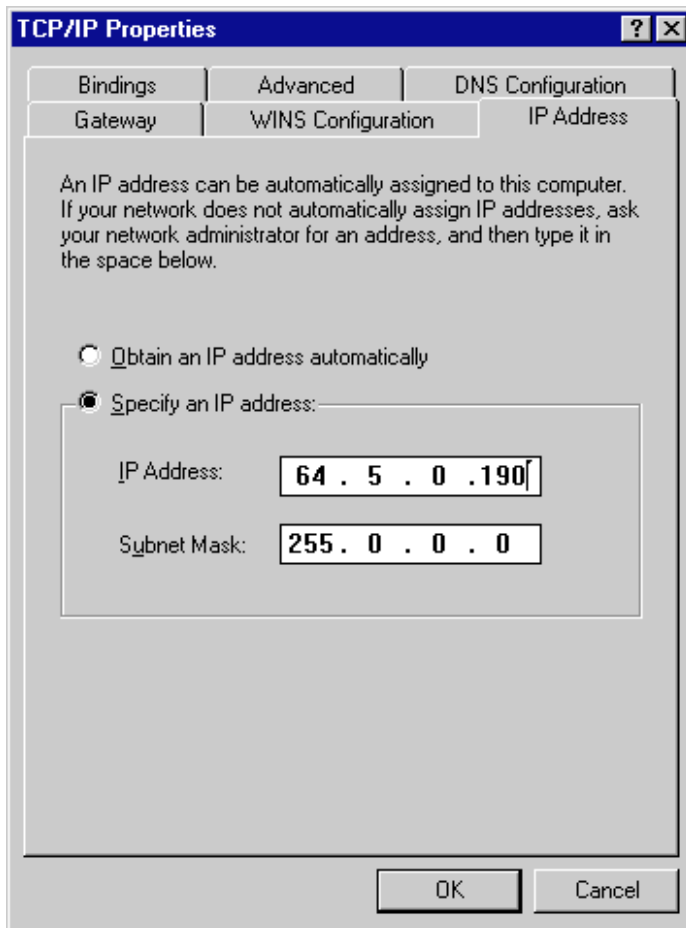


Select Add../Protocol. Select TCP/IP



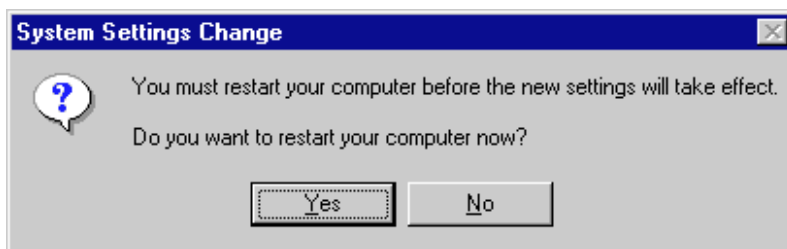
Enter the TCP/IP network detail. On some customer systems, you will have to get their network administrator to assign an IP address for you.

Enter the TCP/IP detail by selecting TCP/IP and clicking properties.



Note, the PC must be given a static IP address because the UTC computer has to know what it is.

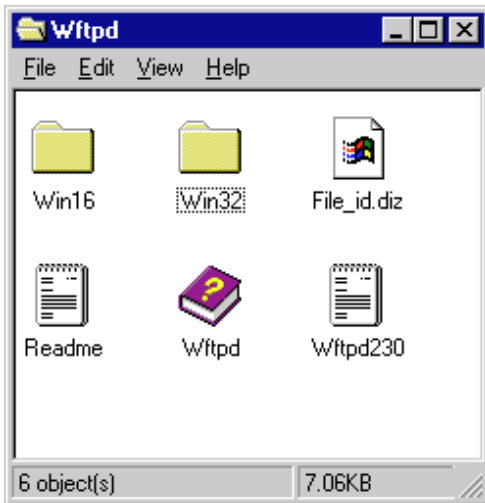
Click OK to come out network setup. The machine must now be restarted.



Setting WFTPD

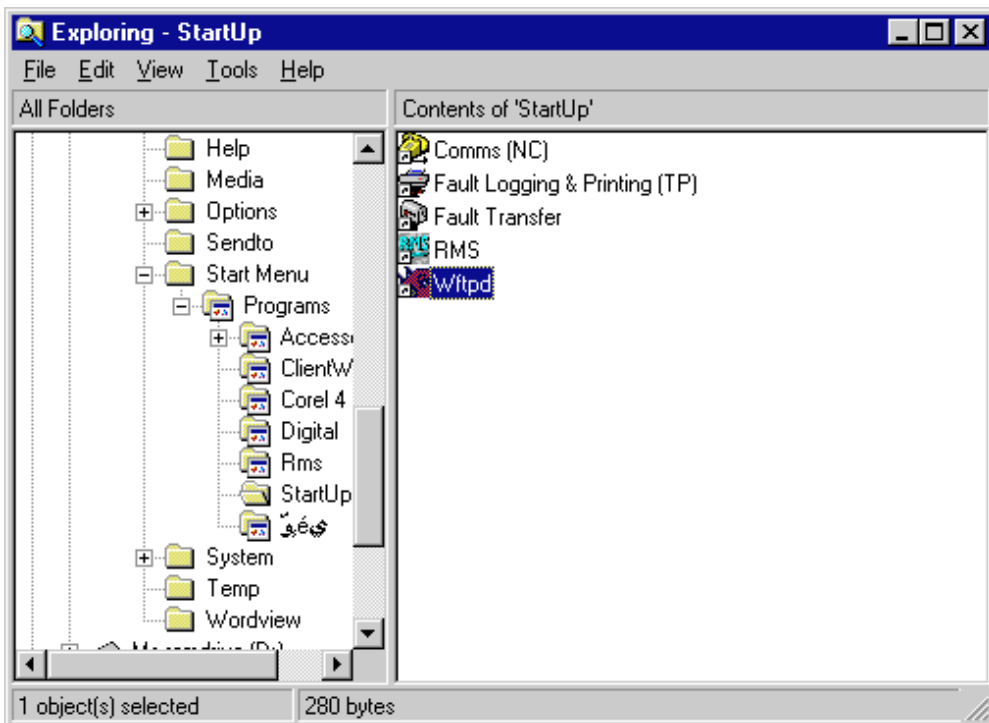
WFTPD (Windows FTP Daemon) is shareware and *must* be registered.

Create a directory for WFTPD - e.g. C:\WFTPD and copy the files from the disk into the directory.

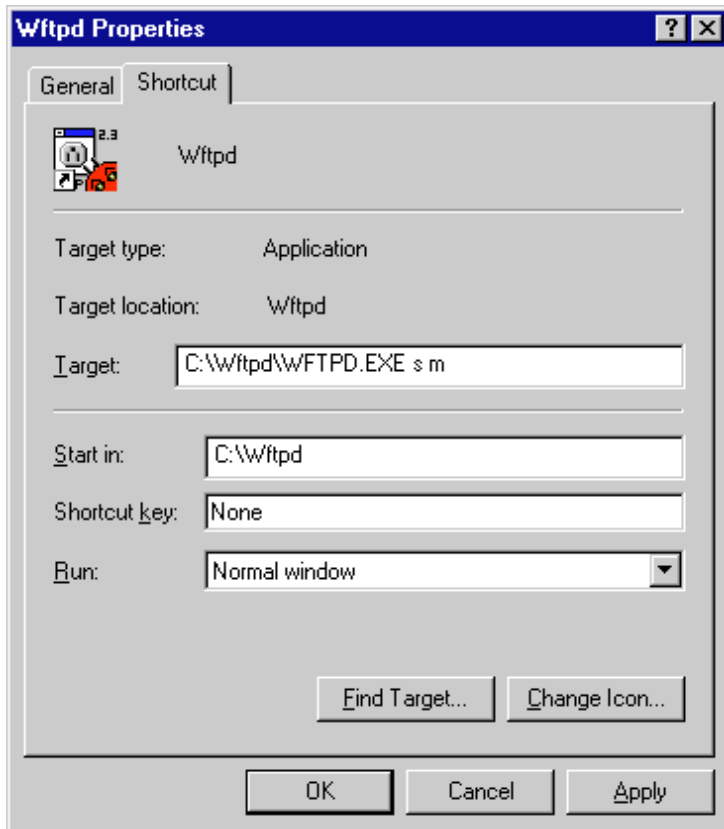


Copy or move the WFTPD.EXE from the WIN32 directory to the C:\WFTPD

Add a shortcut to WFTPD to the startup group.

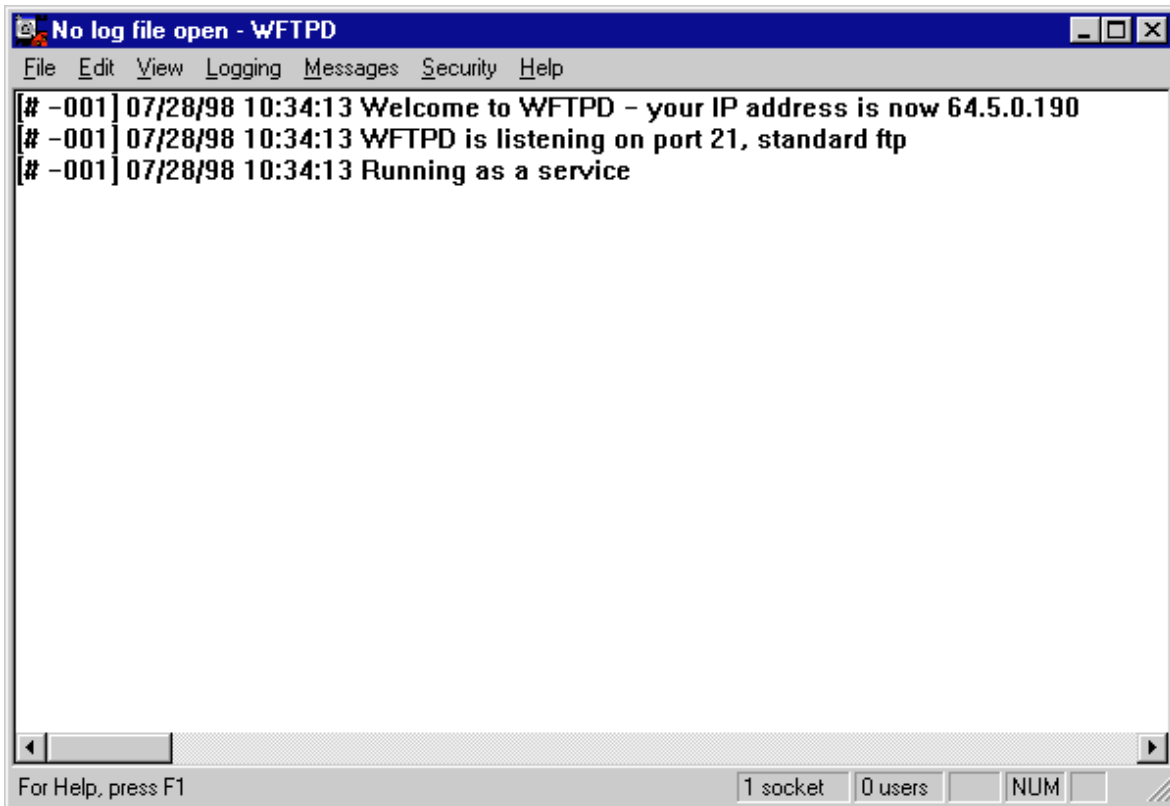


Right click on the short cut and select properties to change the command line parameters.

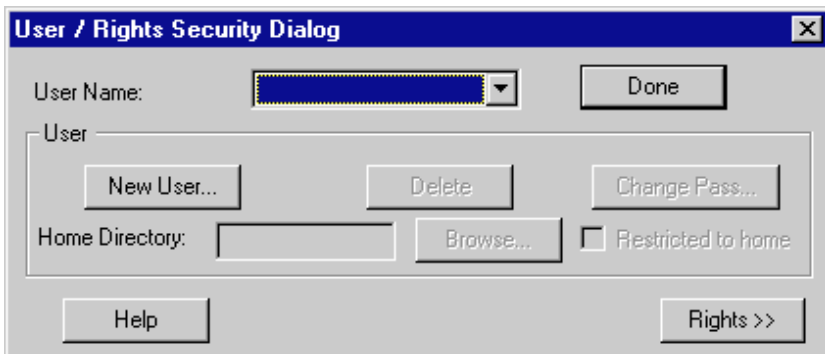


The 's' switch makes WFTPD run as a service, 'm' makes it run minimised.

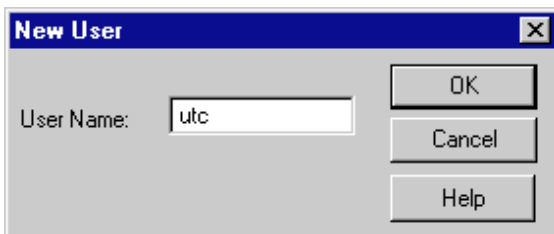
Double click on WFTPD.EXE or its shortcut to run it now to configure it.

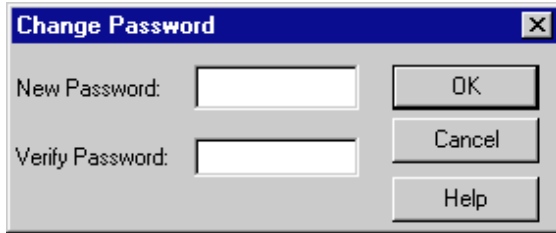


Select Security>>Users/rights to setup a user account



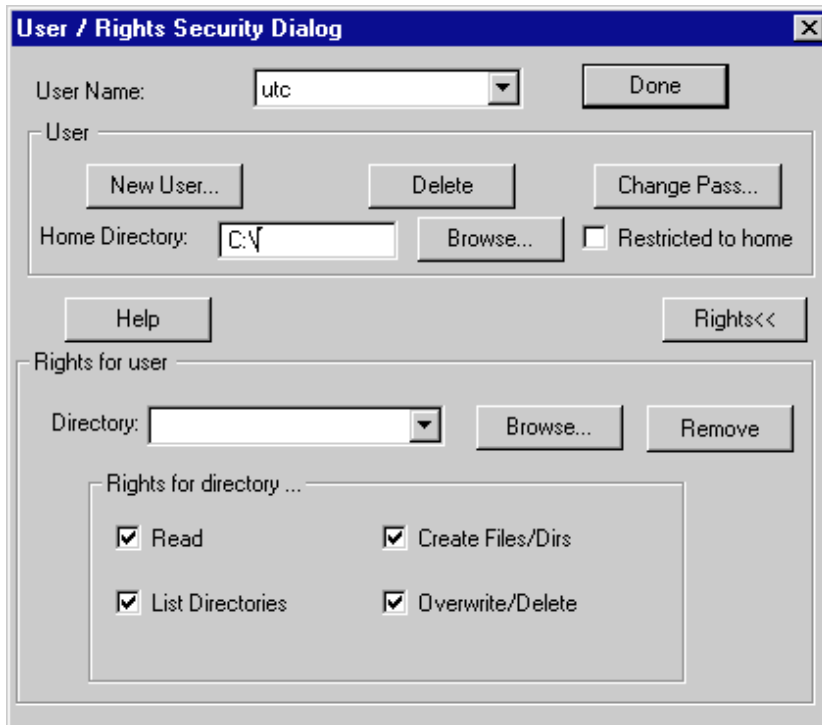
Select New User...





Select no password.

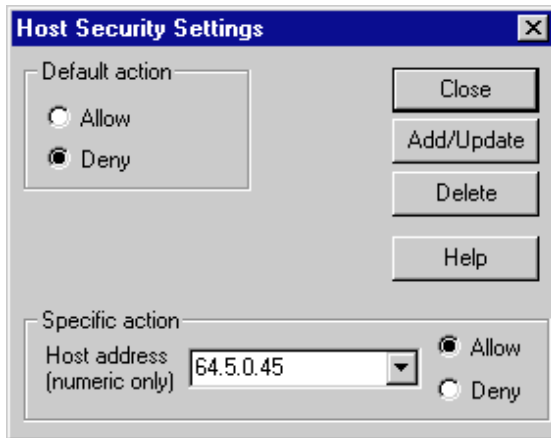
Select the rest of the details as follows.



OPTIONAL:

For added security, you can prevent any computer other than the UTC computer from accessing the FTP service.

Select Security>>Host/net..



The above example restricts access to the FTP daemon to all machines except 64.5.0.45 (UTC45). You can add multiple addresses to the 'allow' list.

Configuring RMS for use with WFTPD.

RMS must write the UTC transfer files to a separate device. The most convenient device available is the ramdrive (D:). Make the Ramdrive big enough for the largest UTC transfer file. (I set the size to 512K).

Edit RMS_SYS.CFG and change the RMS_UTC_LOG parameter to 'D'.

That's it for the PC side. The UTC system will need some other configuration. Make a note of the IP address that you have give the RMS PC as the UTC engineer will need to know it.

Testing the setup.

To check that WFTPD has been setup correctly, go to the UTC computer and call up a DECTerm. Then attempt to FTP the RMS PC. For the account name enter 'utc' and no password. Use 'cd' to change to the D driver and 'get' to pull off DATABASE.001, DATABASE.002 or ECHOFIELD.UTC. Ask a friendly UTC engineer for help.